



STYLES
IMMOBILIER - PARIS

0033(0) 952 346 611

contact@styles.fr

www.styles.fr

2 390 000 €

Buying house

5 rooms

Surface : 240 m²

Surface of the land : 2251 m²

Year of construction : 2020

Exposition : Sud

Features :

Pool, Automatic Watering, Laundry room,
Automatic gate

4 bedrooms

2 terraces

1 bathroom

2 showers

3 WC

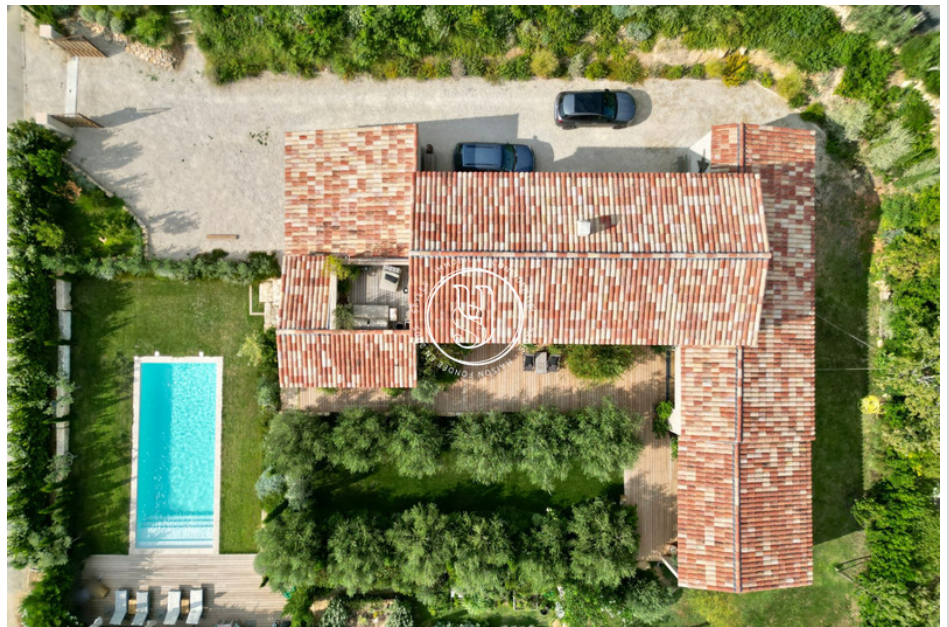
4 parkings

Energy class (dpe) : B

Emission of greenhouse gases (ges) : A

Document non contractuel

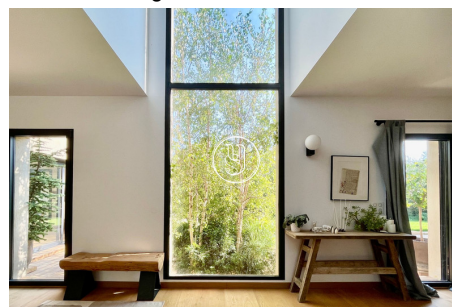
21/12/2024 - Prix T.T.C



House 3821 Saint-Rémy-de-Provence

This charming residence is set amid lush vegetation cleverly designed and planted by the owners. Situated in a cul-de-sac in the heart of the Alpilles mountains, you'll be captivated by its views, calm and luminosity. The entrance opens onto a beautiful, fully glazed reception area, a play of light of the most beautiful effect: the sun's rays filtered by the birch leaves, you'll already be transported. The air-conditioned living spaces are generous, with a beautiful fully-equipped kitchen opening onto a vast covered terrace, and a large scullery. The large living room also gives access to an en suite bedroom. Upstairs, two bedrooms, shower room and toilet, and a vast suite, like an apartment, with a through bedroom (with panoramic view of the Alpilles) opening onto a terrace, bathroom and toilet. The exterior is a true extension of the interior, with a variety of spaces where everyone can find their privacy: a swimming pool with a magnificent view of the Alpilles, a covered terrace like a cool patio bordering the lawn and olive trees, a sunny terrace on the living room side, a vegetable garden, and a rear garden designed as a lush pathway through Mediterranean species, like a labyrinth of groves offering so many opportunities to rest in the shade of the greenery. On the practical side, an awning that can accommodate two vehicles plus several other parking spaces, a space at the rear of the house for technical equipment (clothesline, PAC motors, etc.) and, above all, access to canal water for watering this beautiful plot. More than rare between Paradou and Maussane les Alpilles and all year-round amenities. A charming property, so Provencal, with quality finishes and a rare atmosphere.

Fees and charges :



STYLES - 10 Place Vendôme - 75001 PARIS

Tél: +33 (0) 952 346 611 - contact@styles.fr

Carte professionnelle n°CPI 7501 2016 000 010 235 - RCS Paris 484 347 232

Code NAF 6831Z - SIRET 484 347 232 000 49

Document non contractuel